

DOOR SCHEDULE

NO.	SIZE	FRM	AREA	GLASS	TYPE	FRM	DETAILS	MARKING	REMARKS
1	3070	NA	NA	NA	NA	A	1	1	STORE FRONT DOOR
2	3070	NA	NA	NA	NA	B	1	1	STORE FRONT DBL DOOR
3	3070	NA	NA	NA	NA	A	1	1	STORE FRONT DOOR
4	3070	NA	NA	NA	NA	A	1	1	STORE FRONT DOOR
5	3070	NA	NA	NA	NA	A	1	1	STORE FRONT DOOR
6	3070	NA	NA	NA	NA	C	1	1	STORE FRONT DOOR
7	3070	NA	NA	NA	NA	C	1	1	STORE FRONT DOOR
8	3070	NA	NA	NA	NA	C	1	1	STORE FRONT DOOR
9	3070	NA	NA	NA	NA	C	1	1	STORE FRONT DOOR
10	3070	NA	NA	NA	NA	C	1	1	STORE FRONT DOOR
11	3070	NA	NA	NA	NA	C	1	1	STORE FRONT DOOR
12	3070	NA	NA	NA	NA	C	1	1	STORE FRONT DOOR
13	3070	NA	NA	NA	NA	C	1	1	STORE FRONT DOOR
14	3070	NA	NA	NA	NA	C	1	1	STORE FRONT DOOR
15	3070	NA	NA	NA	NA	C	1	1	STORE FRONT DOOR
16	3070	NA	NA	NA	NA	C	1	1	STORE FRONT DOOR
17	3070	NA	NA	NA	NA	C	1	1	STORE FRONT DOOR
18	3070	NA	NA	NA	NA	C	1	1	STORE FRONT DOOR
19	3070	NA	NA	NA	NA	C	1	1	STORE FRONT DOOR
20	3070	NA	NA	NA	NA	C	1	1	STORE FRONT DOOR
21	3070	NA	NA	NA	NA	C	1	1	STORE FRONT DOOR
22	3070	NA	NA	NA	NA	C	1	1	STORE FRONT DOOR
23	3070	NA	NA	NA	NA	C	1	1	STORE FRONT DOOR
24	3070	NA	NA	NA	NA	C	1	1	STORE FRONT DOOR
25	3070	NA	NA	NA	NA	C	1	1	STORE FRONT DOOR
26	3070	NA	NA	NA	NA	C	1	1	STORE FRONT DOOR
27	3070	NA	NA	NA	NA	C	1	1	STORE FRONT DOOR
28	3070	NA	NA	NA	NA	C	1	1	STORE FRONT DOOR
29	3070	NA	NA	NA	NA	C	1	1	STORE FRONT DOOR
30	3070	NA	NA	NA	NA	C	1	1	STORE FRONT DOOR

FIRE NOTES:

IF A NEW FIRE ALARM SYSTEM IS INSTALLED, A DEFERRED SUBMITTAL AND A SEPARATE PERMIT SHALL BE REQUIRED.
 ANY FIRE SPRINKLER MODIFICATIONS WILL REQUIRE A SEPARATE PERMIT, AND A DEFERRED SUBMITTAL.

WALL LEGEND

DPS PANEL (SEE SPEC ON SHEET "DPS").
 NOTE: DPS PANEL ARE REQUIRED AS CLIMATE CONTROL INSULATION PANELS.

SQUARE FOOTAGE

PROPOSED T.I. AREA = 28,100 SQ.FT.

ABBREVIATION LIST

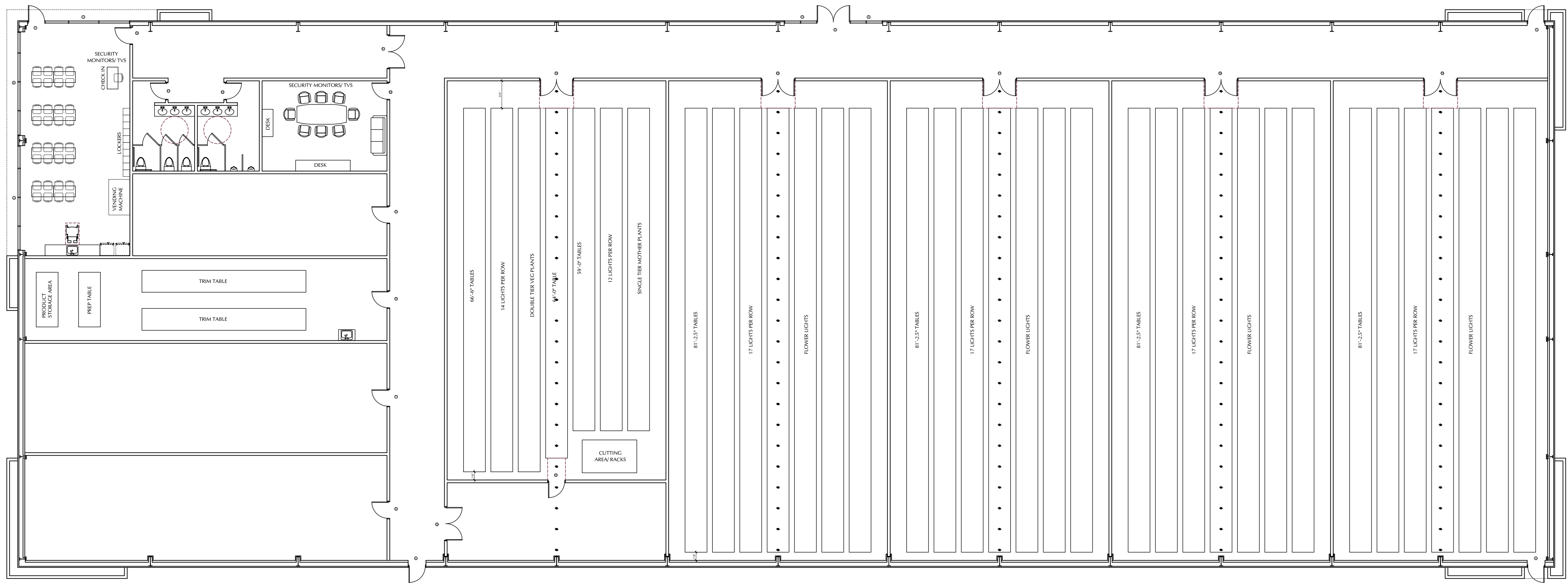
(R) = REMOVED	(S.F.) = STORE FRONT
(E) = EXISTING	(M.T.M.) = METAL
(N) = NEW	(H.C.) = HOLLOW CORE
(RL) = RELOCATED	(S.C.) = SOLID CORE
(TBD) = TO BE DETERMINED	(DR) = DOOR
(RP) = REPLACED	(DW) = WINDOW

DOOR NOTE:

FRAMING CONTRACTOR TO VERIFY NEW DOOR MANUFACTURE FOR ROUGH DOOR OPENING REQUIRED.

WINDOW SCHEDULE

NO.	SIZE	FRM	AREA	GLASS	TYPE	FRM	DETAILS	MARKING	REMARKS
A	19'-1 3/4"X7'-0"	1	133.88	0.320	BUG SCREEN	0.250	AL AL	1	
B	18'-11 3/4"X7'-0"	1	132.79	0.320	BUG SCREEN	0.250	AL AL	1	
C	15'-5 1/2"X7'-0"	1	108.15	0.320	BUG SCREEN	0.250	AL AL	1	
D	6'-0"X7'-0"	1	42.0	0.320	BUG SCREEN	0.250	AL AL	1	
E	6'-0"X7'-0"	1	42.0	0.320	BUG SCREEN	0.250	AL AL	1	



72-140 MAGNESIA FALLS, STE:2
 RANCHO MIRAGE, CA 92270
 O: 760-776-3800
 C: 760-485-5308
 GC LICENCE: 1044032

DESERT HOT SPRINGS RESEARCH AND DEVELOPMENT

LITTLE MORONGO ROAD, DHS, CA

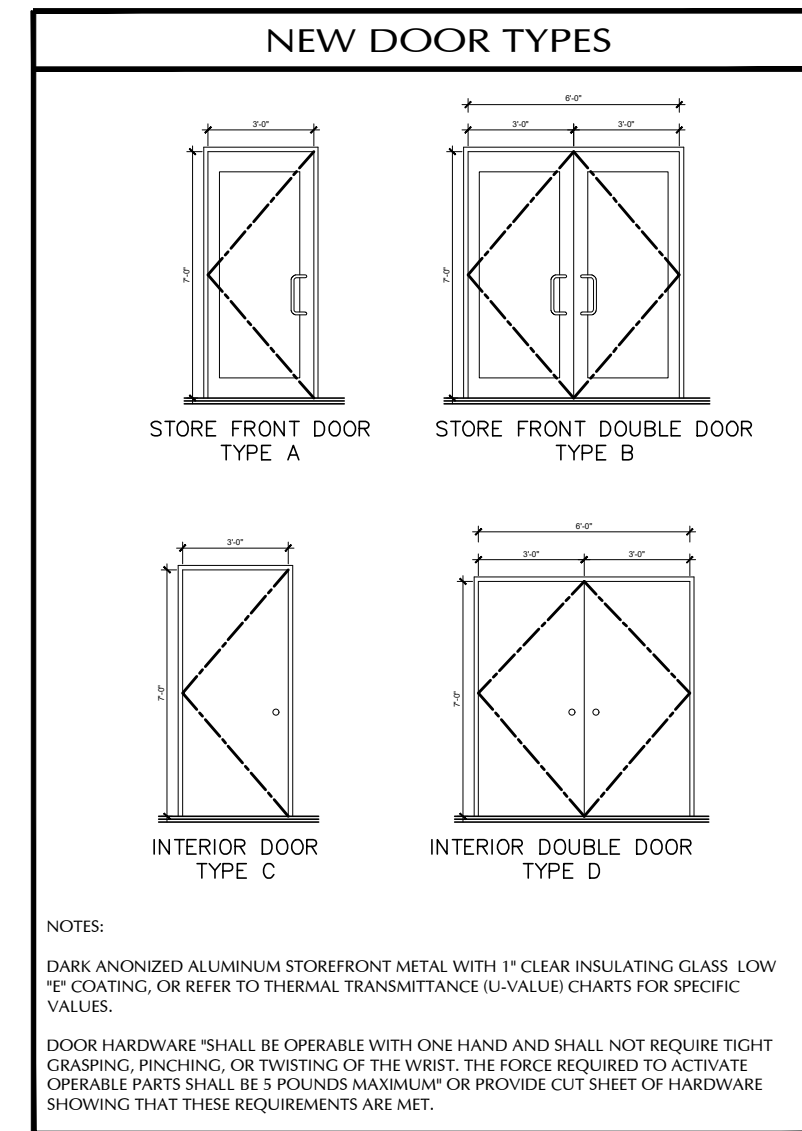
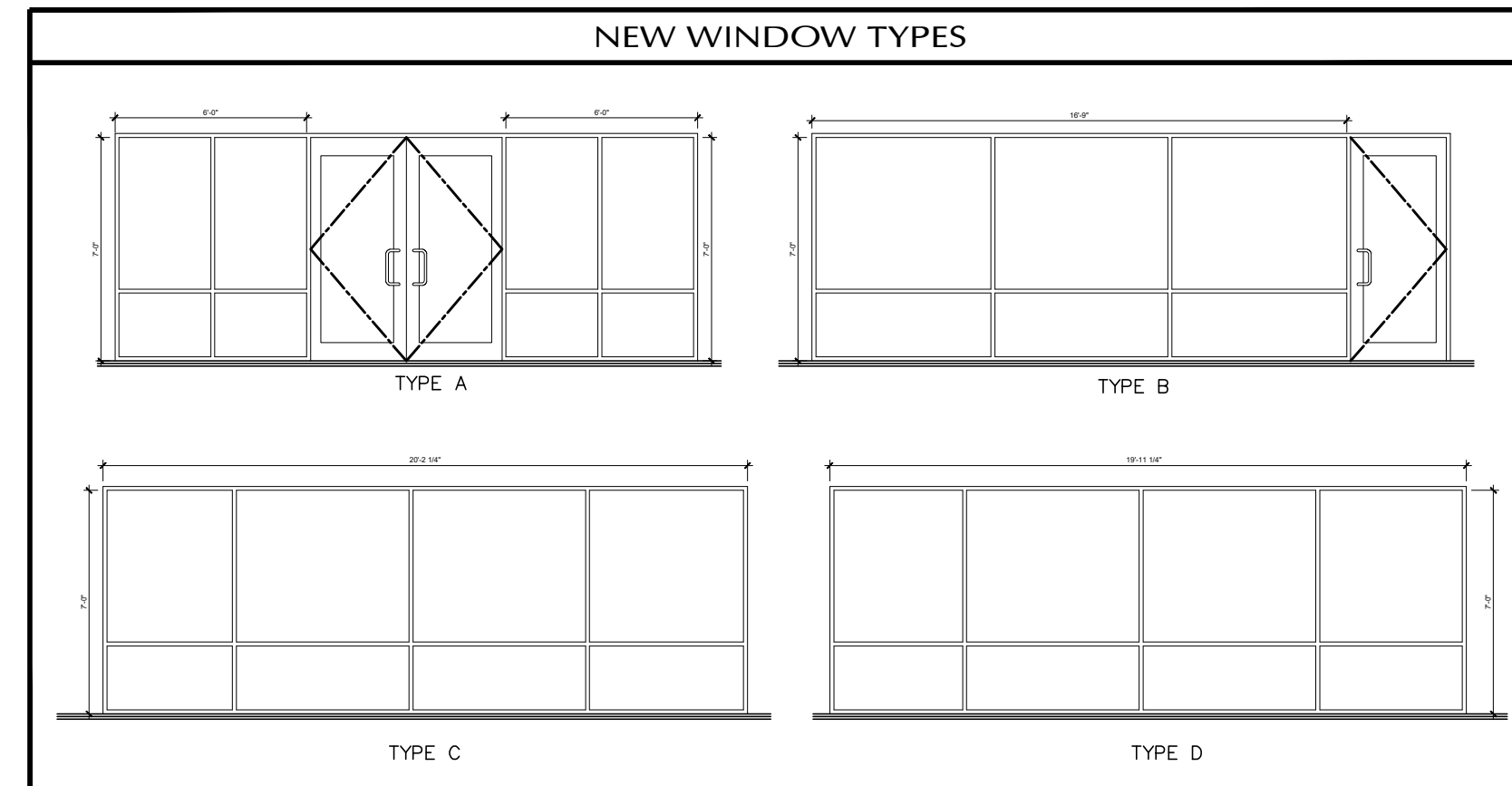
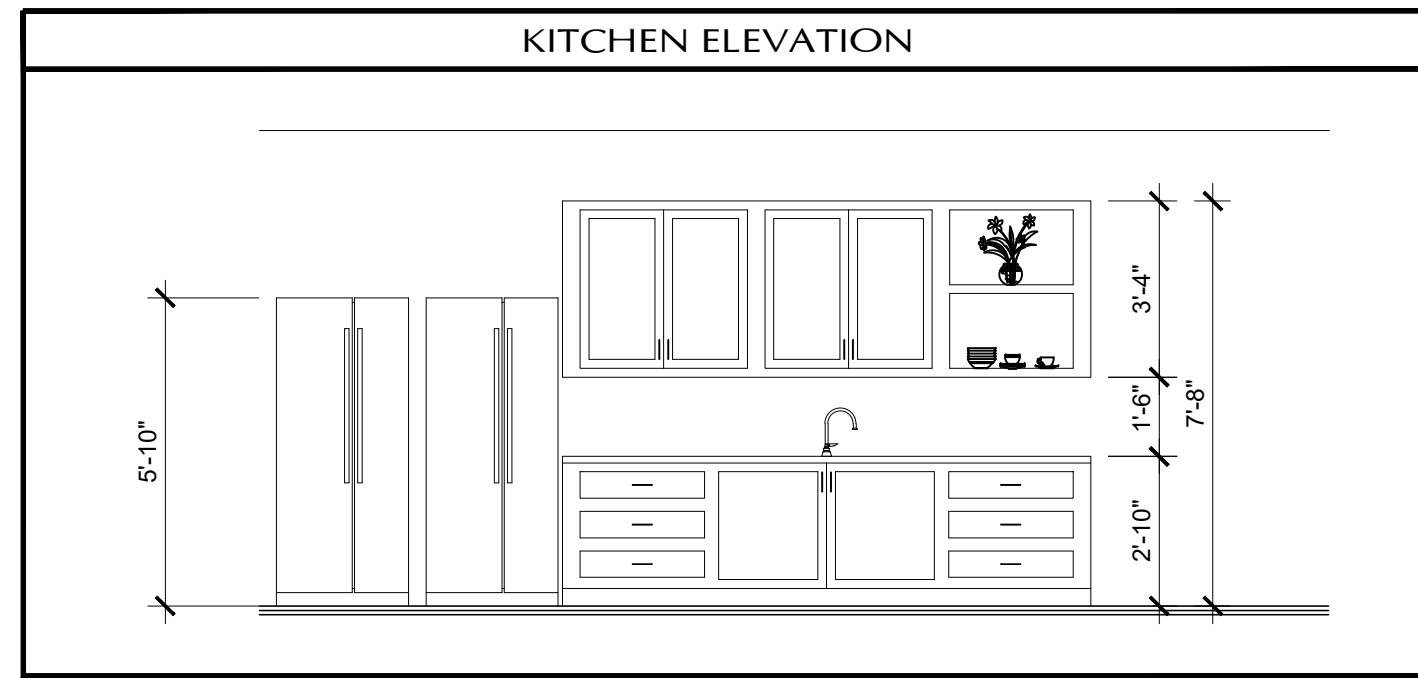
REVISIONS

DATE	BY

DRAWN: ITZEL CONS
 DATE: JANUARY 2022
 SCALE: AS NOTED
 JOB NO: 11-2021

28,100 SQ.FT.
 BUILDING 101
FLOOR PLAN
 SCALE: 3/32"=1'-0"

SHEET
A-3
 FLOOR PLAN



DOOR SCHEDULE		TITLE & GLAZING		FRAME		DETAILS		TYPE		REMARKS	
NO.	SIZE	NEW	EXIST	TYPE	FINISH	TYPE	TYPE	TYPE	TYPE	TYPE	REMARKS
1	3070	NA	NA	NA	NA	A	1	1	1	1	STORE FRONT DOOR
2	223070	NA	NA	NA	NA	B	1	1	1	1	STORE FRONT DEL. DOOR
3	3070	NA	NA	NA	NA	A	1	1	1	1	STORE FRONT DOOR
4	3070	NA	NA	NA	NA	A	1	1	1	1	STORE FRONT DOOR
5	3070	NA	NA	NA	NA	C	1	1	1	1	STORE FRONT DOOR
6	3070	NA	NA	NA	NA	C	1	1	1	1	STORE FRONT DOOR
7	3070	NA	NA	NA	NA	C	1	1	1	1	STORE FRONT DOOR
8	3070	NA	NA	NA	NA	C	1	1	1	1	STORE FRONT DOOR
9	3070	NA	NA	NA	NA	C	1	1	1	1	STORE FRONT DOOR
10	3070	NA	NA	NA	NA	C	1	1	1	1	STORE FRONT DOOR
11	3070	NA	NA	NA	NA	C	1	1	1	1	STORE FRONT DOOR
12	3070	NA	NA	NA	NA	C	1	1	1	1	STORE FRONT DOOR
13	013070	NA	NA	NA	NA	D	1	1	1	1	STORE FRONT DOOR
14	3070	NA	NA	NA	NA	C	1	1	1	1	STORE FRONT DOOR
15	013070	NA	NA	NA	NA	D	1	1	1	1	STORE FRONT DOOR
16	013070	NA	NA	NA	NA	D	1	1	1	1	STORE FRONT DOOR
17	013070	NA	NA	NA	NA	D	1	1	1	1	STORE FRONT DOOR
18	013070	NA	NA	NA	NA	D	1	1	1	1	STORE FRONT DOOR
19	013070	NA	NA	NA	NA	D	1	1	1	1	STORE FRONT DOOR
20	3070	NA	NA	NA	NA	C	1	1	1	1	STORE FRONT DOOR
21	013070	NA	NA	NA	NA	D	1	1	1	1	STORE FRONT DOOR

FIRE NOTES:
 IF A NEW FIRE ALARM SYSTEM IS INSTALLED, A DEFERRED SUBMITTAL AND A SEPARATE PERMIT SHALL BE REQUIRED.
 ANY FIRE SPRINKLER MODIFICATIONS WILL REQUIRE A SEPARATE PERMIT, AND A DEFERRED SUBMITTAL.

WALL LEGEND
 DPS PANEL (SEE SPEC ON SHEET "DPS")
 NOTE: DPS PANEL ARE REQUIRED AS CLIMATE CONTROL/INSULATION PANELS.

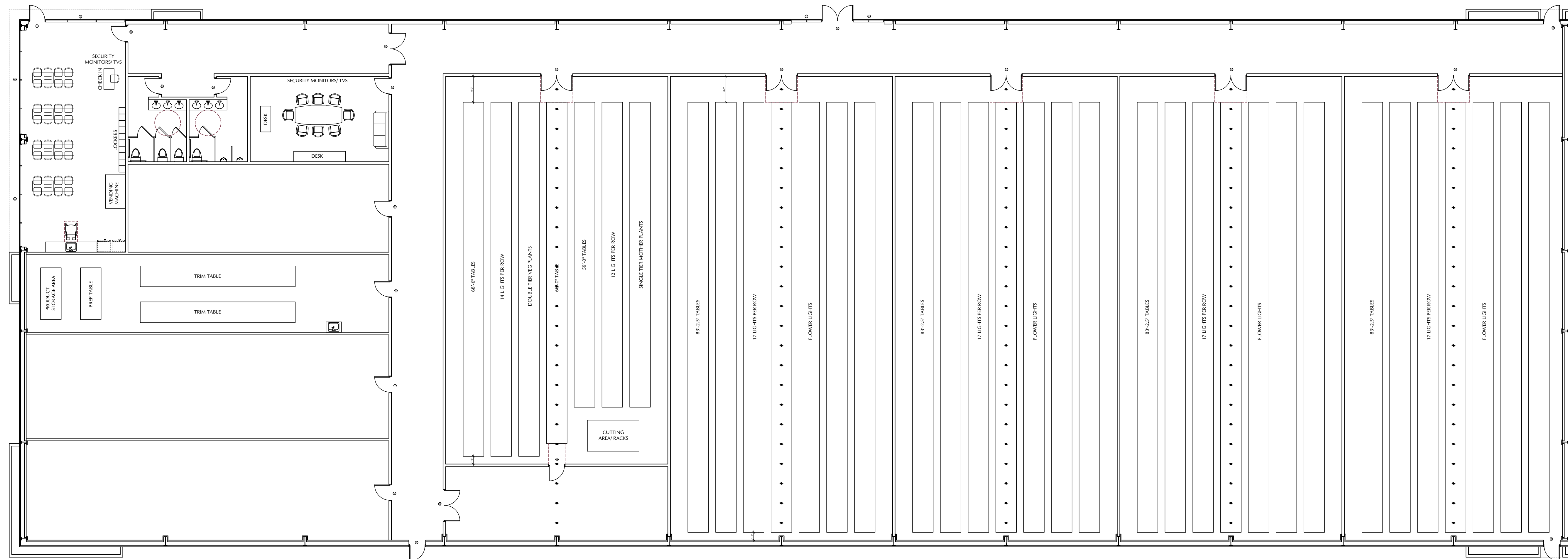
SQUARE FOOTAGE
 PROPOSED T.I. AREA = 30,600 SQ. FT.

ABBREVIATION LIST
 (RD) = REMOVED
 (EX) = EXISTING
 (N) = NEW
 (RL) = RELOCATED
 (TRD) = TO BE DETERMINED
 (RP) = REPLACED
 (S.F.) = STORE FRONT
 (M.F.) = METAL
 (H.C.) = HOLLOW CORE
 (S.C.) = SOLID CORE
 (SD) = DOOR
 (WD) = WINDOW

DOOR NOTE:
 FRAMING CONTRACTOR TO VERIFY NEW DOOR MANUFACTURE FOR ROUGH DOOR OPENING REQUIRED.

WINDOW SCHEDULE		TITLE & GLAZING		FRAME		DETAILS		TYPE		REMARKS	
NO.	SIZE	FEN	AREA	U-VALUE	SHGC	TYPE	TYPE	TYPE	TYPE	TYPE	REMARKS
A	19'-11 1/4" x 7'-0"	1	129.96	0.320	0.250	AL	1	1	1	1	
B	20'-2 1/4" x 7'-0"	1	141.31	0.320	0.250	AL	1	1	1	1	
C	18'-0" x 7'-0"	1	117.25	0.320	0.250	AL	1	1	1	1	
D	8'-0" x 7'-0"	1	42.0	0.320	0.250	AL	1	1	1	1	
E	8'-0" x 7'-0"	1	42.0	0.320	0.250	AL	1	1	1	1	

NOTES:
 DARK ANODIZED ALUMINUM STOREFRONT METAL WITH 1" CLEAR INSULATING GLASS LOW E+ COATING, OR REFER TO THERMAL TRANSMITTANCE (U-VALUE) CHARTS FOR SPECIFIC VALUES.
 DOOR HARDWARE SHALL BE OPERABLE WITH ONE HAND AND SHALL NOT REQUIRE TIGHT GRASPING, PINCHING, OR TWISTING OF THE WRIST. THE FORCE REQUIRED TO ACTIVATE OPERABLE PARTS SHALL BE "5 POUNDS MAXIMUM" OR PROVIDE CUT SHEET OF HARDWARE SHOWING THAT THESE REQUIREMENTS ARE MET.



72-140 MAGNESIA FALLS, STE:2
 RANCHO MIRAGE, CA 92270
 O: 760-776-3800
 C: 760-485-5308
 GC LICENCE: 1044032

DESERT HOT SPRINGS
"RESEARCH AND DEVELOPMENT"
 LITTLE MORONGO ROAD, DHS, CA

REVISIONS	
DATE	BY

DRAWN: ITZEL CONS
 DATE: JANUARY 2022
 SCALE: AS NOTED
 JOB NO: 11-2021

SHEET
B-3
 FLOOR PLAN

30,600 SQ. FT.
 BUILDING 102
FLOOR PLAN
 SCALE: 3/32"=1'-0"